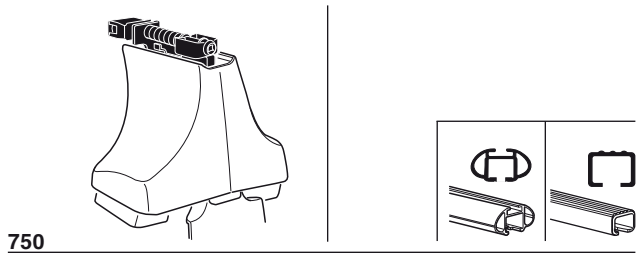
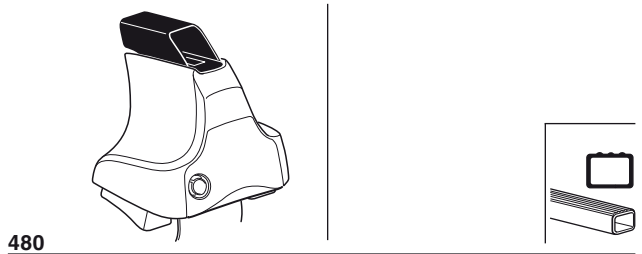
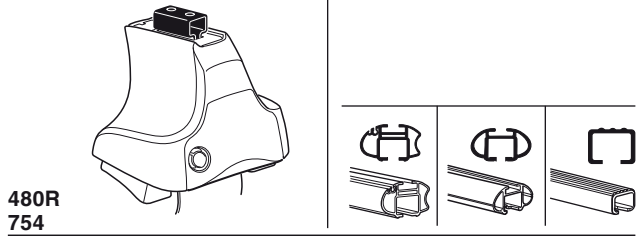


# Kit 1437

SUZUKI SX4, 5-dr Hatchback, 06-



x2	x2	x2	x2	x2
x2	x2	x2	x2	x2
x2	x2	x4	x4	x2
x4		x4		

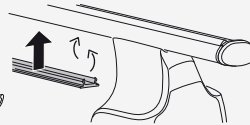
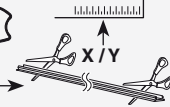
**Kit**



**3**



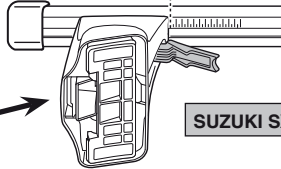
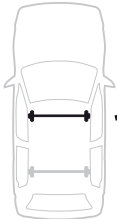
754



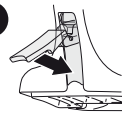
750



**1**



**2**

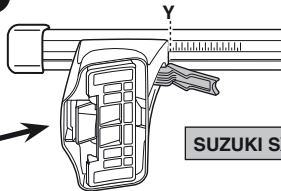
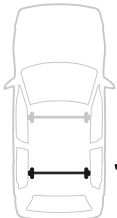


SUZUKI SX4, 5-dr Hatchback, 06-

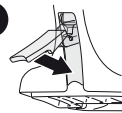
X

13

**1**



**2**



SUZUKI SX4, 5-dr Hatchback, 06-

Y

10

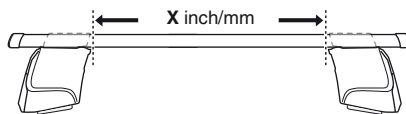
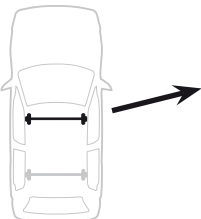


480R

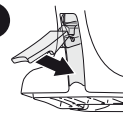


480

**1**



**2**



SUZUKI SX4, 5-dr Hatchback, 06-

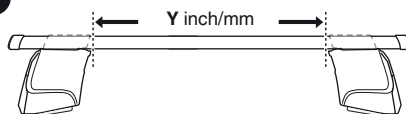
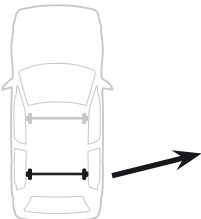
X inch

X mm

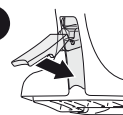
30 3/4"

781 mm

**1**



**2**



SUZUKI SX4, 5-dr Hatchback, 06-

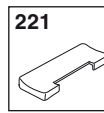
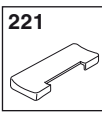
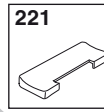
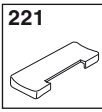
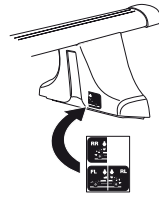
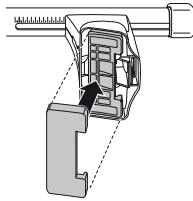
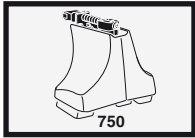
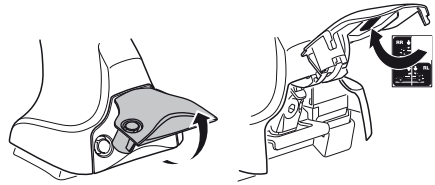
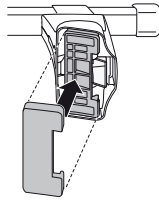
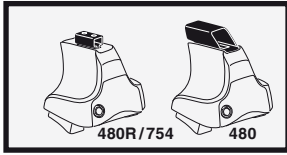
Y inch

Y mm

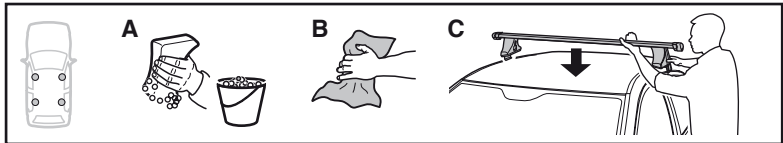
29 5/8"

751 mm

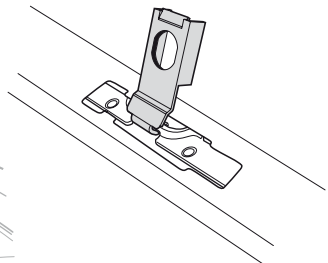
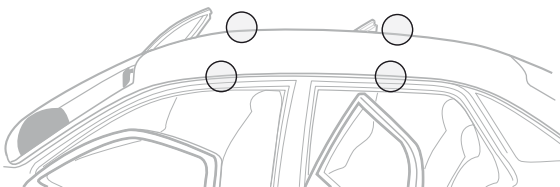
4



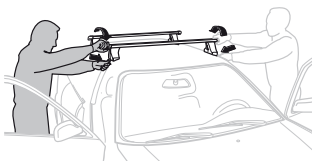
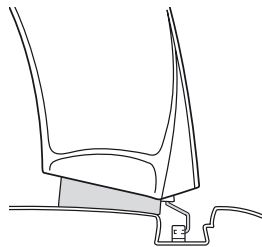
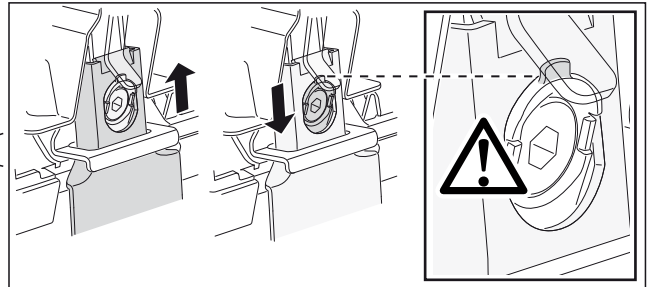
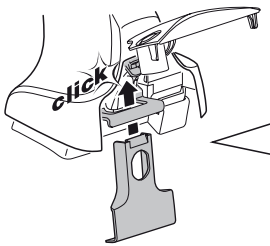
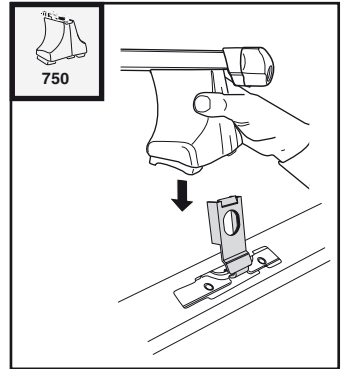
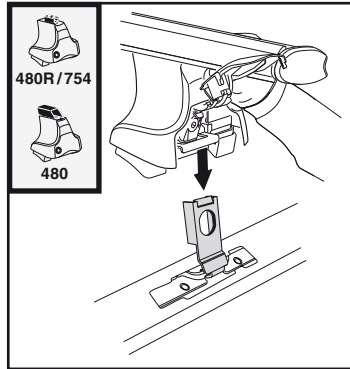
5



871 x 4



6



- GB/US** Tighten alternately  
**D** Die Schrauben abwechselnd anziehen  
**F** Serrer alternativement chaque côté  
**NL** Afwisselend aan de linker- en de rechterkant aandraaien  
**I** Alternare il serraggio delle viti  
**E** Apretar alternativamente  
**PT** Aperte alternadamente  
**S** Dra åt växelvis  
**FIN** Kierrä vuorotellen  
**EST** Pinguldage vaheldumisi  
**LAT** Pievelciēt pamišus  
**LIT** Užsukinėkite pakaitomis  
**PL** Śruby dokręcaj naprzemiennie  
**RU** Затягивайте попеременно

- CZ** Pokręťta багажника dokręcaj naprzemiennie.  
**SK** Dofahujte striedavo  
**SLO** Privijajte izmenično.  
**HR** Naizmjenično zategnite  
**HU** Egymástól függetlenül szorítandó  
**GR** Σφιγγετε εναλλάξ  
**TR** Dönüşümlü sıkın

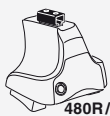
**中文** 交替拧紧

**한국어** 번갈아 가며 조이십시오.

**日本語** 交互に締め付けてください。

**ไทย** ขั้้นเินแบบสลับ

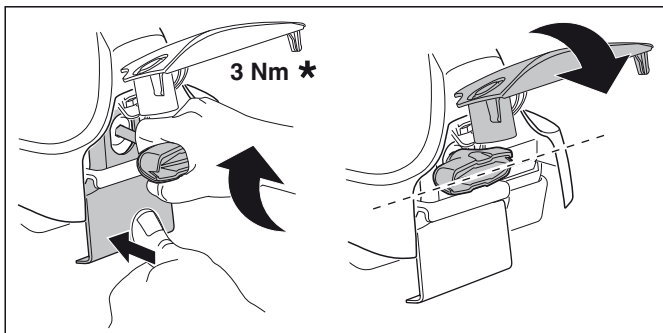
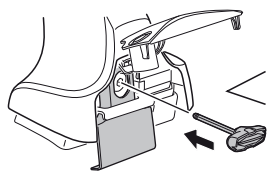
7



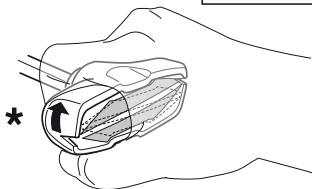
480R/754



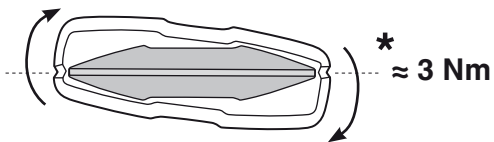
480



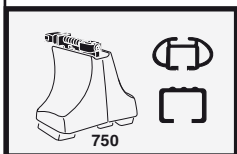
3 Nm \*



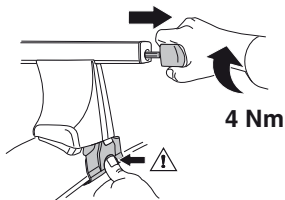
\*



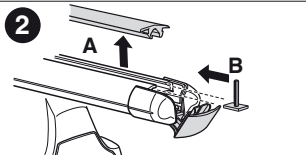
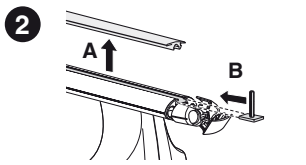
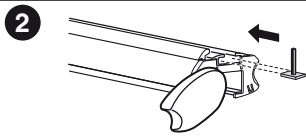
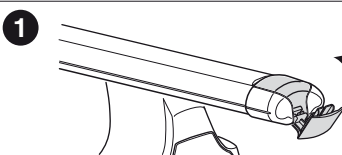
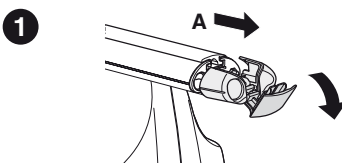
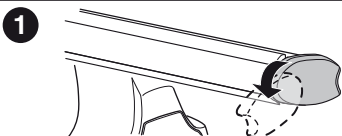
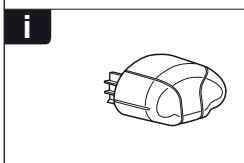
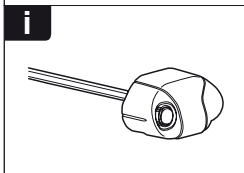
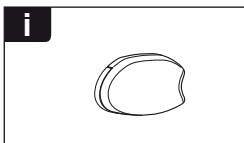
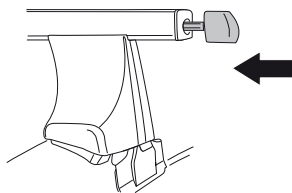
\* ≈ 3 Nm

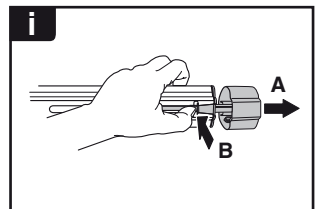
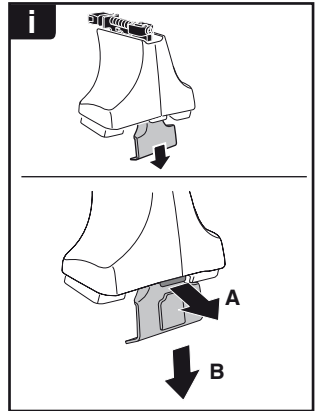
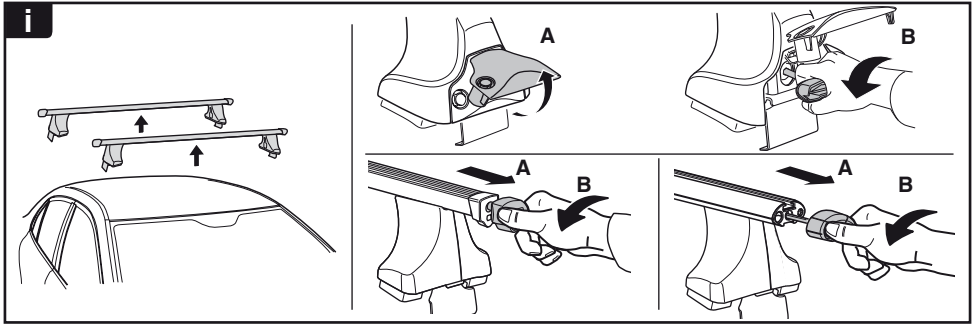


750



4 Nm





**THULE**  
SWEDEN  
**ONE  
KEY  
SYSTEM**



		(x4)
		(x6)
		(x8)
NA		(x10)
EUR		(x12)
ASIA		(x12)



WW ▶ Thule Sweden AB, Box 69, 330 33 Hillerstorp, SWEDEN  
NA ▶ Thule Inc., 42 Silvermine Road, Seymour, Connecticut 06483, USA

info@thule.com  
customer.service@thule.com

www.thule.com